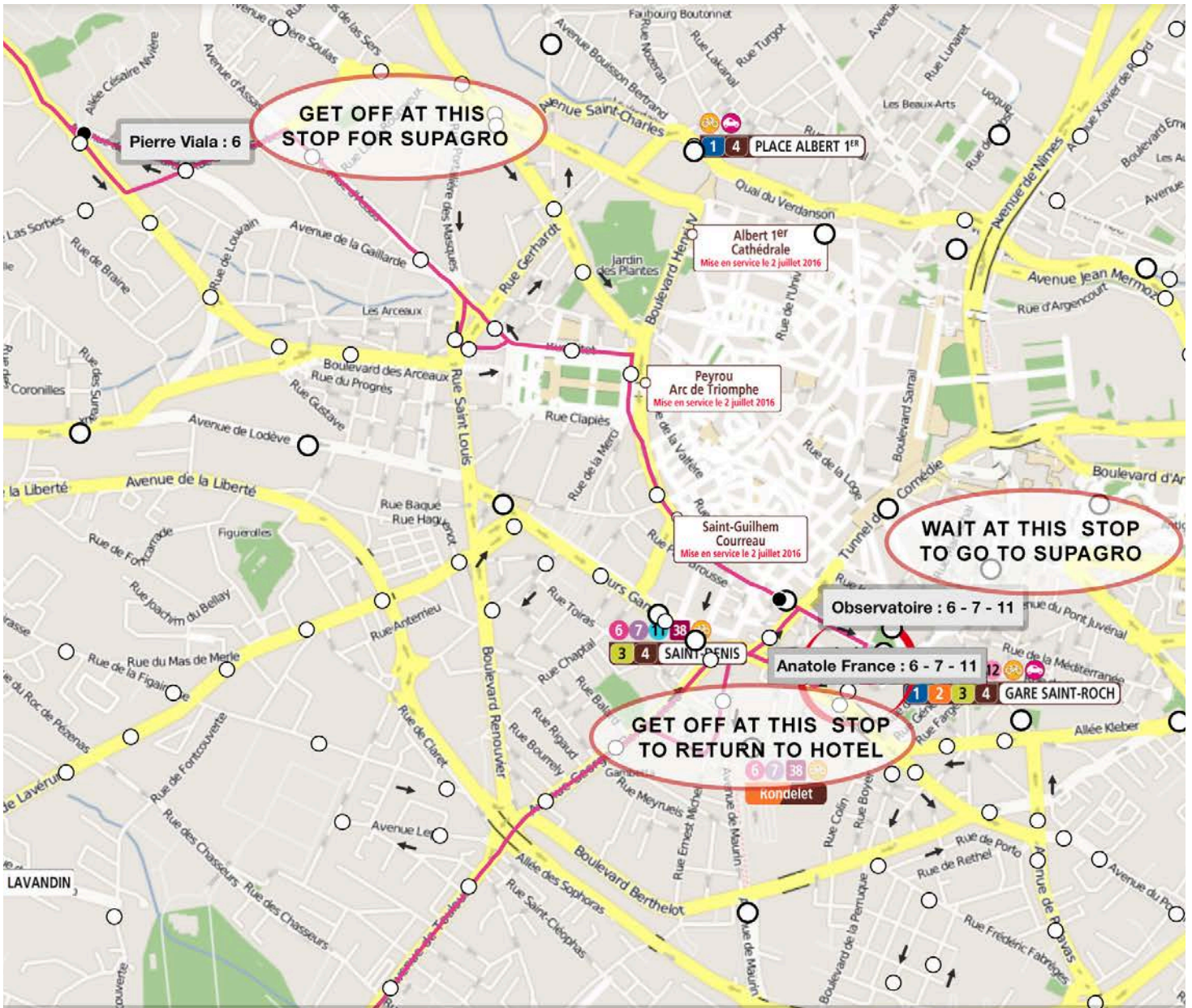


GETTING TO AND FROM SUPAGRO



This is a map showing the route of Bus 6. The actual bus stops are shown as black dots (hard to see - sorry)

SupAgro-bound Bus 6 (direction **EUROMEDECINE**) from the **Observatoire** stop on **Boulevard de l'Observatoire** to the **Pierre Viala** stop at SupAgro.

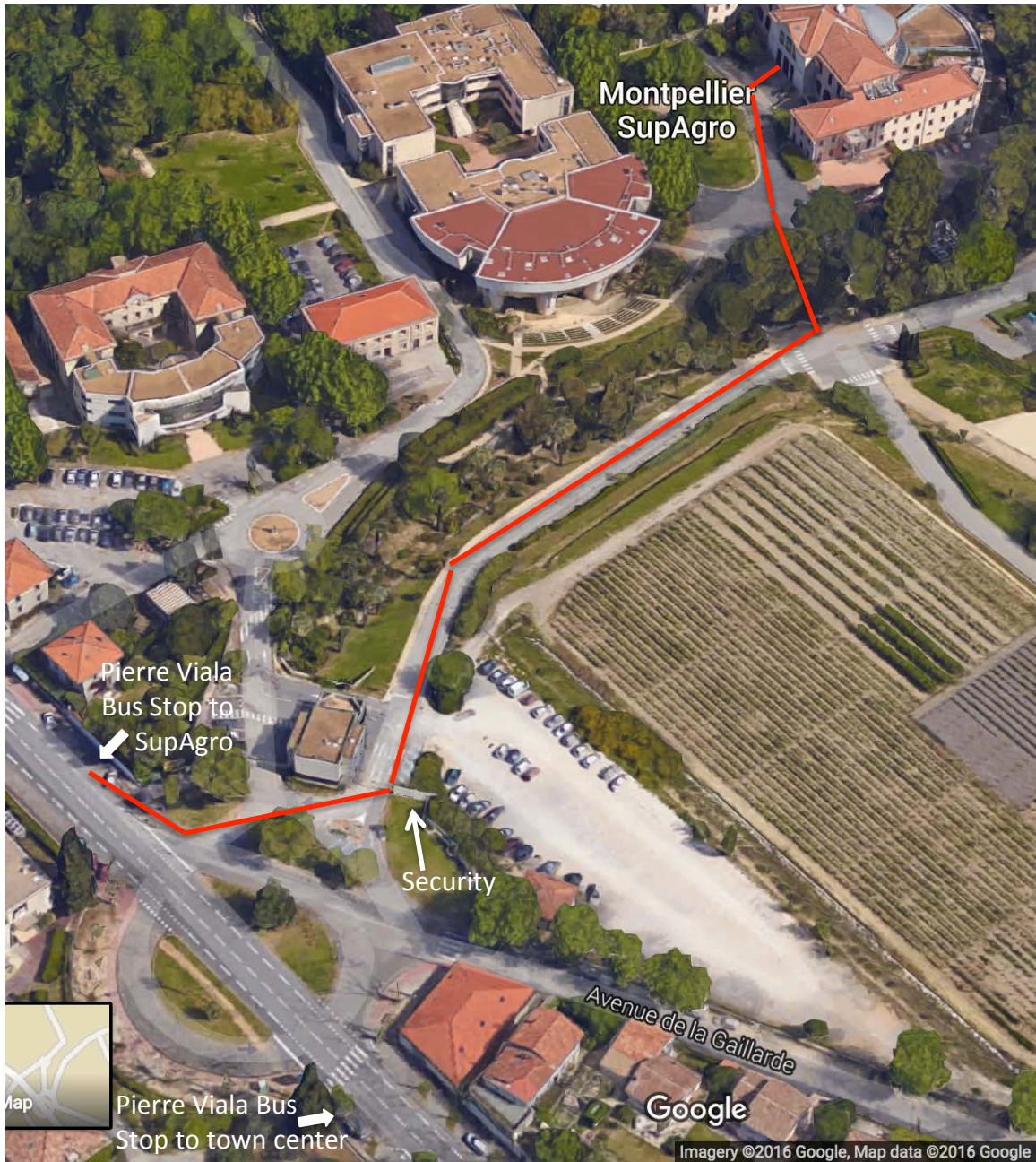
It also shows the location of the **return Bus 6** (direction **Pas du Loup**) from the stop **Pierre Viala** to the town center at **Anatole France**.



Here you are at Hotel du Midi. Walk on – the next major intersection is Boulevard de l’Observatoire. The bus stop is to the right, in the middle of the road, between the vehicle lanes and the tram lanes.



This is **Boulevard de l’Observatoire**, at the **Observatoire** stop. **Bus 6** stops near the **end of the platform**. Make sure to take **Bus 6** in the direction **EUROMEDICINE**. **Tickets can be purchased at a kiosk** in the center of the platform (individual or book of 10). Note: There are 6 bus routes that pick up here. Make sure you are on Bus 6 only.



This is an arial view of the SupAgro campus.

Arriving: Bus 6 stops at **Pierre Viala**, just past the campus entrance. You will need to walk to Security with you PASSPORT in hand. Then, proceed up the road as shown by the red line. You will go up some stairs and arrive to the Chateau. All Side Session meetings are in the Chateau.

Departing: Cross the road to the downtown stop. Take **Bus 6**, direction **Pas du Loup**, and get off at **Anatole France**.